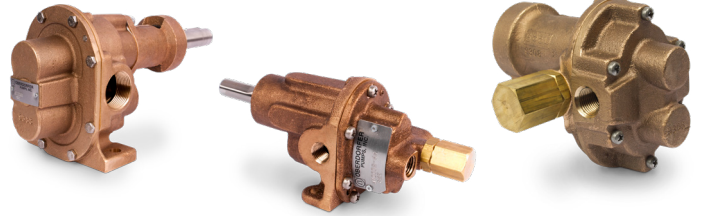




Bronze Pumps - General Overview

Bronze Pedestal Rotary Gear Pumps

- Bronze Corrosion Resistant Castings
- Special Cast Helical Bronze Gears
- Stainless Steel Shafts & Fasteners
- Heavy Duty Carbon Bearings (Self-Lubricating)
- Formed Ring Seal Packing
- Optional Lip & Mechanical Seals Available on Most Models



PUMP MODELS			PORTS	NOMINAL FLOW	DIFFERENTIAL					
					50 psi		100 psi		150 psi	
Pedestal	Close Coupled	Carbo-nator	NPT	GPM	FLOW GPM	POWER BHP	FLOW GPM	POWER BHP	FLOW GPM	POWER BHP
	N999	N95	1/4	1	0.8	0.09	0.6	0.15	0.4	0.22
N1000	N991	N91 N61	1/4	2	1.8	0.17	1.5	0.28	1.2	0.39
N2000	N992		1/4	4	3.5	0.25	3.0	0.43	2.5	0.68
N3000	N993		3/8	8	6.6	0.73	6.0	1.1	5.5	1.4
N4000	N994		1/2	10	10.0	1.1	9.4	1.8	9	2.3
N7000	N970		3/4	19	18.9	1.6	18.0	2.7	17.4	3.6
N9000	N990		1	23	22.3	1.7	21.3	2.7	20.1	3.7
N11H	N1100		1 1/4	60	56	4.0	51	6.0		
N13H N13500			1 1/2	90	84	6.4	81	9.4		
N26HD			2	120	169	13	163	19		

Bronze Centrifugal Pumps

- Bronze Corrosion Resistant Castings
- Bronze Impellers
- Stainless Steel Shaft
- Self Priming to 20 ft of Suction Lift
- Can Handle Most Difficult Solvents with Proper Seal Arrangement, Viton (R)* (S10) or Teflon (R)* (S11) Available



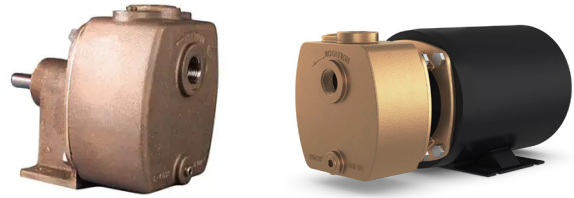
PUMP MODELS		Material of construction	PORT SIZE	MAX SPEED	MAX HEAD		MAX CAPACITY
Pedestal Mount	Close Coupled		Inches	RPM	Feet	PSI	GPM
50	101M 500	Bronze	3/8	3450	25	10.8	8.0
	170M 172B	Bronze	3/4	3700	14	6.1	20
60	104M 600	Bronze	3/4 x 1/2	3450	52	22.5	24
	109M	Bronze	1 1/4 x 1	3450	44	19.1	60
	700A	Bronze	1 1/4 x 1	3450	30	13.0	60
	700B	Bronze	1 1/4 x 1	3450	43	18.6	70
800B	700C	Bronze	1 1/4 x 1	3450	52	22.5	80
	800B	Bronze	1 1/4 x 1	3450	135	58.5	80
70 119M	700D	Bronze	1 1/4 x 1	3450	68	29.5	90
81	815	Bronze	1 1/2 x 1 1/4	3450	100	43.3	94
82	820	Bronze	1 1/2 x 1 1/4	3450	115	49.8	97
83	830	Bronze	1 1/2 x 1 1/4	3450	128	55.5	100





Self-Priming Centrifugals

- Self Priming to 20 ft of Suction Lift
- Bronze Corrosion Resistant Castings
- Available All Bronze or Corrosion Resistant Aluminum
- Bronze Models with Monel Shaft (30PB-1) - Ideal for Marine Service. (Air Conditioning, Bilge, and Sea Water Recirculating)
- Can Handle Most Difficult Solvents with Proper Seal Arrangement, Viton(R)* (S10) or Teflon(R)* (S11) Available



PUMP MODELS			PORT SIZE	MAX SPEED	MAX HEAD		MAX CAPACITY	LIFT
Pedestal mount	Close Coupled	Material of Construction	INCHES	RPM	FEET	PSI	GPM	FEET
30PB	300B	Bronze	1	3450	35	15.2	20.0	15
75	750	Bronze	1 1/2	3450	82	35.5	90.0	15

Rubber Impeller Pumps

- Bronze Construction - Corrosion Resistance
- Large Suction and Discharge Ports
- Neoprene Impeller Standard, Buna N Impeller Optional
- High Chrome Nickel Stainless Steel Shaft



		PORT SIZE	MAX SPEED	MAX HEAD		MAX CAPACITY
		INCHES	RPM	FEET	PSI	GPM
Pedestal Mount	N200M	3/8	3000	49	21	5.0
	201M	1/2	3450	60	26	11.0
	301M	3/4	3450	81	35	21
	401M-2	1	3000	92	40	36
	403M	1	3000	92	40	36
	404M	1	3000	92	40	36
	501M	1 1/4	1750	104	45	58
Flange Mount	N202M-3	3/8	3450	60	26	9
	N202M-7	3/8	3450	60	26	11
	N202M-11	1	3450	60	26	11
	N202M-15	3/8	3450	60	26	11
Close Coupled	201D	3/8	2300	39	17	7
	209M	1 1/2 x 3/8	2600	28	12	9
	210	1/2	1725	60	26	7
	211D	1	1725	60	26	7
	211M	3/4	3450	69	30	13
	214M	1 1/2 x 3/8	3450	69	30	13
	305M	1	1200	46	20	8
	405M-4	1	1725	99	43	25
	406M-4	1 1/2 x 1	1725	99	43	25

12500 South Pulaski Road
 Alsip 60803
 United States
 800-448-1668

www.oberdorferpumps.com

